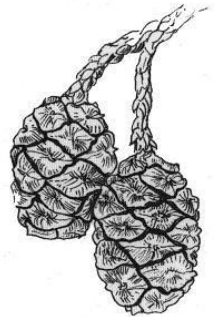




Pfeiffer Big Sur State Park



(831) 667-1112

STORE FOOD to protect yourself and park wildlife. Lock food inside a vehicle. It is not secure in tents, picnic table storage boxes, or ice chests. Dispose of trash and food waste into the campground dumpsters immediately to keep wildlife from consuming or spreading them around. Please recycle your plastic, glass, and aluminum.

WOOD COLLECTING, including leaves and twigs, is not allowed. This material decays and assists the growth of live trees and other plants. Firewood is sold at the park kiosk year-round.

FIRES AND FIREWOOD Fires are allowed only in provided fire rings, or camp stoves. Do not build ground fires outside the fire ring. Do not leave fires unattended. Always put out fires with water before going to bed or leaving your site.

CAMPING VEHICLES must register at park entrance and display a valid receipt on the windshield prior to parking. Vehicles must park in their designated campsite. Two (2) vehicles maximum per site (including towed vehicles). No parking is allowed along campground roads. There is no overflow parking.

SHOWERS only work with tokens which can be purchased at select showers around the campground or at the State Park Kiosk. Tokens cost \$1 and provide 5 minutes of shower time.

DOGS are permitted on paved roads and must be kept on a leash at all times. Do not leave dogs unattended at any time. Dogs are not permitted on hiking trails.

QUIET HOURS are from 10 p.m. to 6 a.m., all amplified music must be turned off and voices lowered to a whisper.

GENERATOR HOURS are from 10 a.m. to 8 p.m.

OCCUPANCY A maximum of six people (including children) are allowed per campsite.

BICYCLES are permitted on paved roads. They are not allowed on any of the trails. Visitors under 18 must wear a helmet on anything with wheels.

CHECKOUT TIME is noon. Please pack up your site and remove all food and trash. Leave it as you found it.

SPEED LIMIT within the park is 15 miles per hour. Be cautious of wildlife and pedestrians.

HAMMOCKS, CLOTHESLINES, SLACKLINES, etc. may not be attached to trees and plants in any fashion. All plants in the State Park are protected by law.

NO FISHING. Threatened steelhead trout need cool, flowing water. Do not build dams or move rocks in the river.

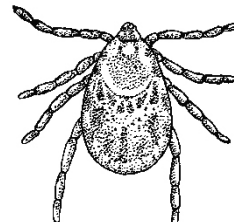


Poison Oak

Beware, grown in groups of three leaves, they are green until Fall when they turn shades of red.

Ticks

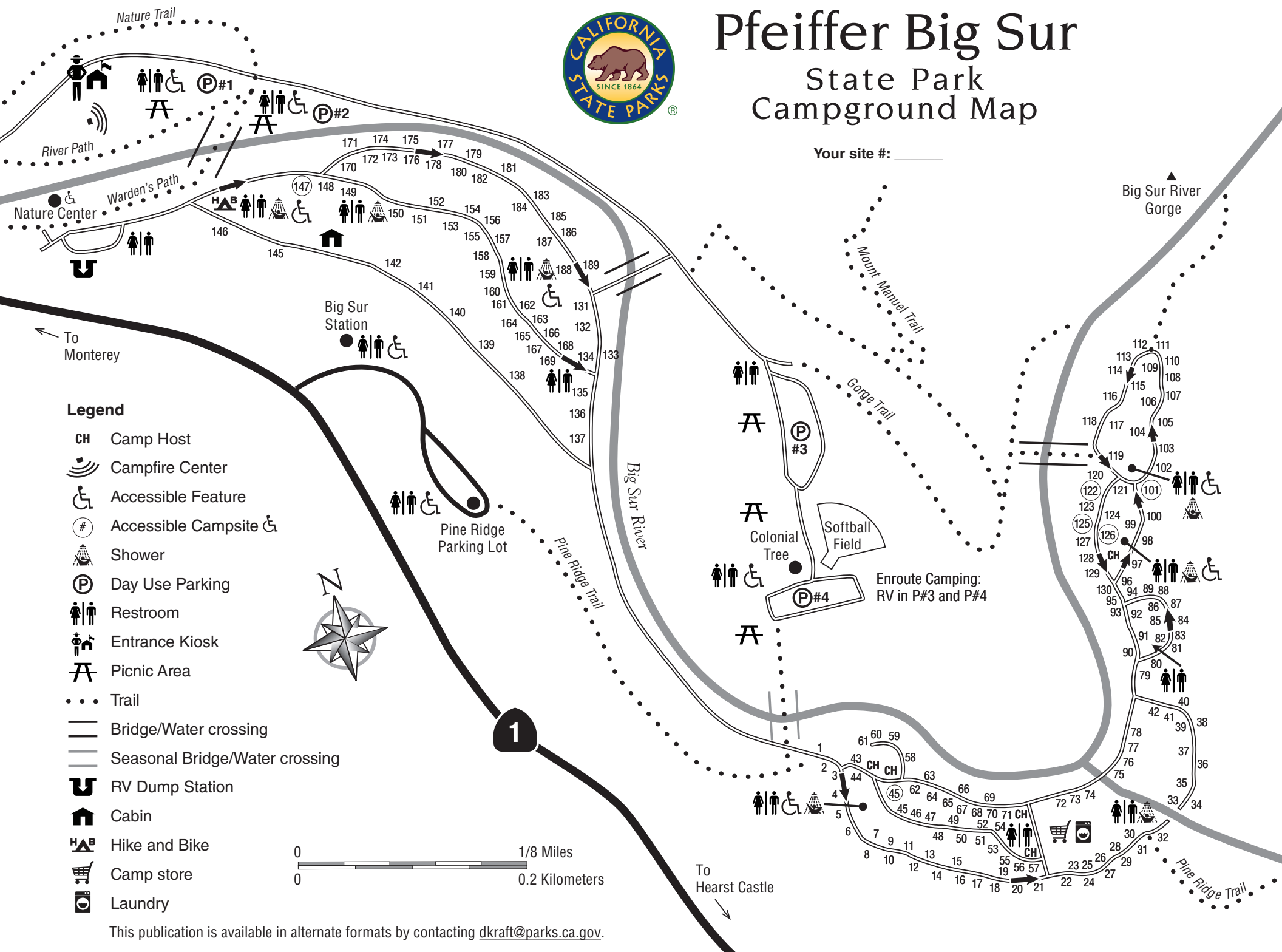
Found in Big Sur. Check yourself and your children frequently.





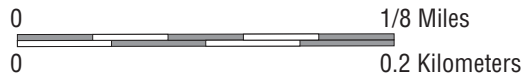
Pfeiffer Big Sur State Park Campground Map

Your site #: _____



Legend

- CH Camp Host
- Campfire Center
- Accessible Feature
- Accessible Campsite
- Shower
- Day Use Parking
- Restroom
- Entrance Kiosk
- Picnic Area
- Trail
- Bridge/Water crossing
- Seasonal Bridge/Water crossing
- RV Dump Station
- Cabin
- Hike and Bike
- Camp store
- Laundry



This publication is available in alternate formats by contacting dkraft@parks.ca.gov.